

# Lakeland

COMMUNITY COLLEGE

PROGRAM GUIDE

Applied Studies Division

## Polysomnography

- Polysomnography Certificate

 Opportunity  
starts **HERE**  
[lakelandcc.edu](http://lakelandcc.edu)



# Polysomnography



Students in the polysomnography certificate program will gain knowledge to help people of all ages with sleep disorders. Students will learn about sleep science, bio-electricity studies (EKG, EEG, EMG), respiratory monitoring, cardiopulmonary physiology and much more.

## Career Opportunities

- Hospitals
- Private sleep labs
- The median salary for registered and licensed polysomnographic technologists is \$57,579 (Source: Salary.com, July 27,2020)

## The Lakeland Advantage

- Upon completion of Lakeland's certificate program, students will be eligible to take the Registered Polysomnographic Technologist (RPSGT) exam.
- Polysomnography certificate courses count toward the Associate of Applied Science (AAS) degree.
- Completion of the certificate allows students to continue education and earn an AAS degree in multi-skilled health technology.

## Lakeland's Program

- Program follows the most recent version of the American Association of Sleep Technologists standard curriculum.
- Program is one year in length (three consecutive semesters). Second and third semesters include a clinical round at a regional sleep lab.
- Students learn in a state-of-the-art health building which recently opened in 2018.

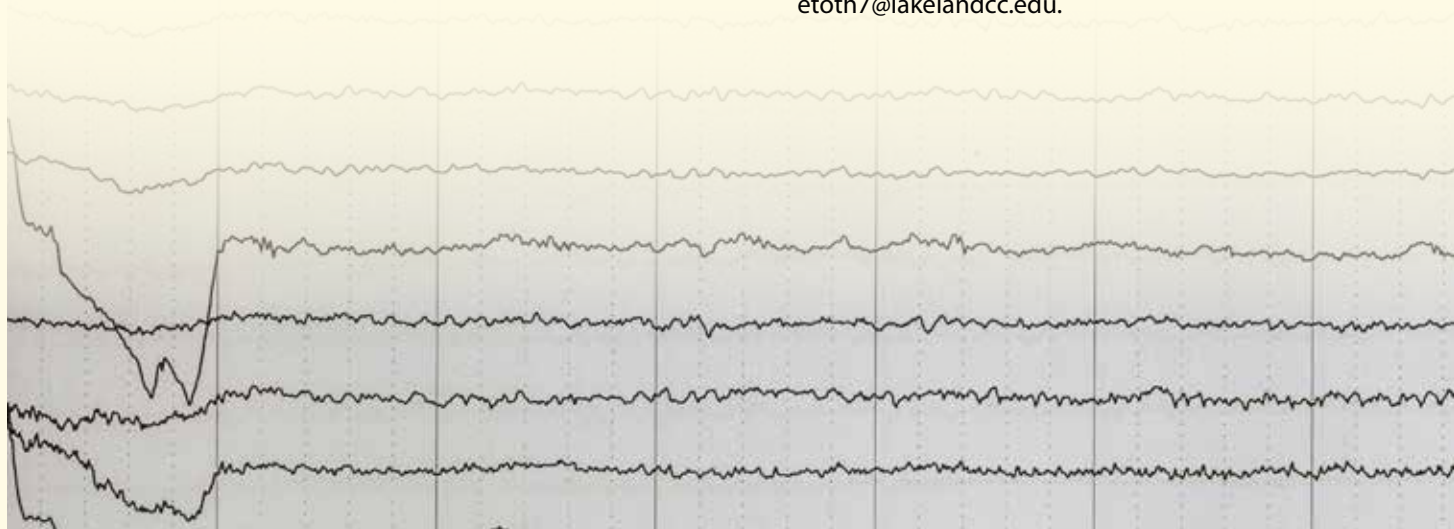
## Student Profile

People who are interested in a career in polysomnography tend to be:

- Night owls
- Compassionate and trustworthy
- Ethical and mature in demeanor

## For more information

1.800.589.8520 • lakelandcc.edu  
Erin Toth, EdD, RPSGT CET  
Polysomnography Program Director  
440.525.7176  
etoth7@lakelandcc.edu.



## Polysomnography Certificate/Area of Specialization (3250)

The mission of the Polysomnographic Technologist Program at Lakeland Community College is to serve students and the healthcare community preparing graduates to perform entry-level polysomnographic studies at the trainee/technician level. Upon completion, graduates may apply for the registered Polysomnographic Technologist Board Exam. The program is one year in length, comprised of three consecutive semesters. The second and third semesters include a clinical round at a local sleep lab. Graduates will perform overnight and daytime sleep studies as well as titration polysomnography.

Hospital and privately owned sleep labs employ sleep technologists at the trainee/technician level to conduct the diagnostic polysomnographic studies, and the registered polysomnographic technologist for expanded functions. The multiple parameters including within a sleep study provide an extremely comprehensive evaluation of the patients' health and allows the physicians to diagnose many different sleep disorders and other comorbidities. The role of the sleep technician is one with great ethical responsibility and importance and can change the lives of the patients they serve.

Students in the polysomnography certificate specialization will gain knowledge in medical terminology, pharmacology, sleep science, bio-electricity studies (EKG, EEG, EMG), respiratory monitoring, cardiopulmonary physiology, polysomnography, treatment modalities, and anatomy and physiology.

All students enrolled in a nursing or allied health program/certificate must complete a criminal background check. In accordance with clinical site requirements, students with a criminal record may be ineligible to participate in a clinical course/rotation/practicum. Delays, for any reason, in obtaining background results may cause an interruption in the clinical rotation sequence or inability to complete program requirements. Additional background screening may be required by individual facilities.

Drug testing may be requested in accordance with clinical affiliation requirements and/or for patient/student health and safety.

A minimum GPA of 2.0 and a 'C' grade or higher is required in all science and program-specific courses for graduation.

Students must apply for admission to this certificate/area of specialization. Students should contact the director of admissions or the Counseling Office for details about applying for admission to the program.

NOTE: HLTH 1215 Medical Terminology for Health Professions must be completed before applying for admission to the program.

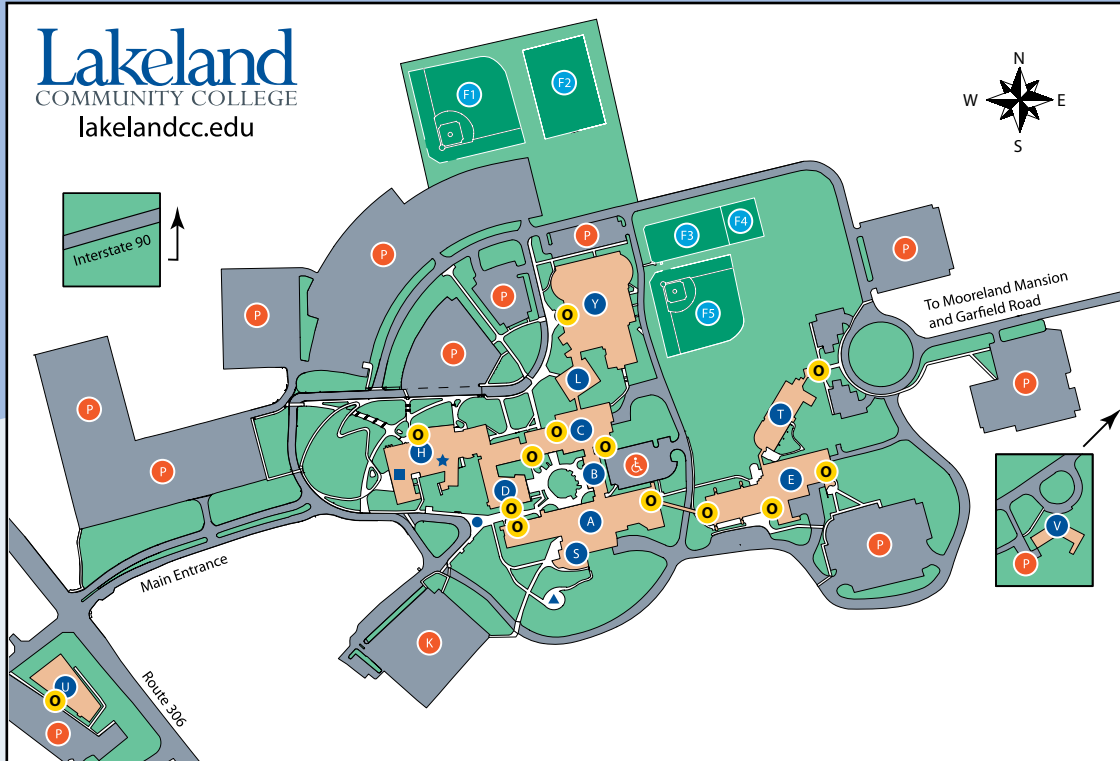
After completion of the certificate, students may choose to continue their education and earn the Associate of Applied Science (AAS) degree in Multi-Skilled Health Technology. Polysomnography certificate courses are applicable toward the AAS degree.

Students must apply for admission to this certificate/area of specialization. Students should contact the director of admissions or the Counseling Office for details about applying for admission to the program.

**NOTE:** HLTH 1215 Medical Terminology for Health Professions must be completed before applying for admission to the program.

Course	Title	Credit Hours
<b>First Semester</b>		
HLTH 1215	Medical Terminology for Health Professions	3
HLTH 1500	Ethics and Legal Issues for Health Professionals	2
HLTH 1600	Basic Pharmacology	2
HLTH 1700	Basic Electrocardiography	2
POLY 1100	Beginning Polysomnography	2
POLY 1150	Cardiopulmonary and Sleep Disorder	2
	Credit Hours	13
<b>Second Semester</b>		
ENGL 1110 or ENGL 1111	English Composition I (A) <sup>1</sup> or English Composition I (B)	3
BIOL 2210	Anatomy and Physiology I	4
POLY 1200	Intermediate Polysomnography	4
	Credit Hours	11
<b>Third Semester</b>		
BIOL 2220	Anatomy and Physiology II	4
POLY 1300	Advanced Polysomnography	4
	Credit Hours	8
	Total Credit Hours	32

<sup>1</sup> English course selection is based on placement test results (ENGL 1111 English Composition I (B) is 4 credits, only 3 credits apply to the degree).



**CAMPUS MAP**

- |  |                                     |  |
|--|-------------------------------------|--|
| <b>A</b> A-Building/<br>Student Service Center | <b>F4</b> Multi-Purpose Court       | <b>V</b> Mooreland Mansion   |
| <b>B</b> B-Building                            | <b>F5</b> Softball Field            | <b>Y</b> Athletic & Fitness Center                                       |
| <b>C</b> C-Building                            | <b>H</b> H-Building                 | <b>●</b> Clocktower  |
| <b>D</b> D-Building                            | <b>K</b> Faculty Staff Lot          | <b>★</b> Dental Hygiene Clinic   |
| <b>E</b> E-Building                            | <b>L</b> Teaching Learning Center   | <b>♿</b> Handicap Parking  |
| <b>F1</b> Baseball Field                       | <b>P</b> Parking                    | <b>■</b> HIVE  |
| <b>F2</b> Soccer Field                         | <b>S</b> S-Building/Breakers Dining | <b>▲</b> Mind Ladders  |
| <b>F3</b> Tennis Courts                        | <b>T</b> T-Building                 | <b>○</b> Open Entrances and Temperature<br>Check Station during COVID-19 |
|  | <b>U</b> Holden University Center   |  |

**Quality Education**

Professors at Lakeland are experts in their fields with real-world experience. Lakeland prepares you for a high-demand career or for transfer to a four-year college or university. Access to bachelor's and graduate degrees is available on campus from partner institutions through Lakeland's Holden University Center ([lakelandcc.edu/uc](http://lakelandcc.edu/uc)).

**Affordable Tuition**

Lakeland's tuition is about one-third the cost of most four-year schools. More than 50 percent of Lakeland students receive some form of financial assistance ([lakelandcc.edu/tuition](http://lakelandcc.edu/tuition)).

**Convenience**

Lakeland offers convenient day, evening, weekend and online courses ([lakelandcc.edu/schedule](http://lakelandcc.edu/schedule)).

**Focus on Students**

Lakeland offers a variety of student services to help you succeed, such as counseling, tutoring, computer labs, career services, free parking and affordable child care.

**Opportunity starts HERE**

**Visit** us on campus or online. Call 440.525.7900, email [recruitmentcenter@lakelandcc.edu](mailto:recruitmentcenter@lakelandcc.edu) or visit [lakelandcc.edu/visit](http://lakelandcc.edu/visit) for a campus tour.

**Apply** online: [lakelandcc.edu/apply](http://lakelandcc.edu/apply)

**Accreditation**

Lakeland Community College is accredited through the Higher Learning Commission (HLC) and participates in the Academic Quality Improvement Program (AQIP). The Higher Learning Commission, 230 South LaSalle Street, Suite 7-500, Chicago, IL 60604-1413, phone: 800.621.7440, [hlcommission.org](http://hlcommission.org).